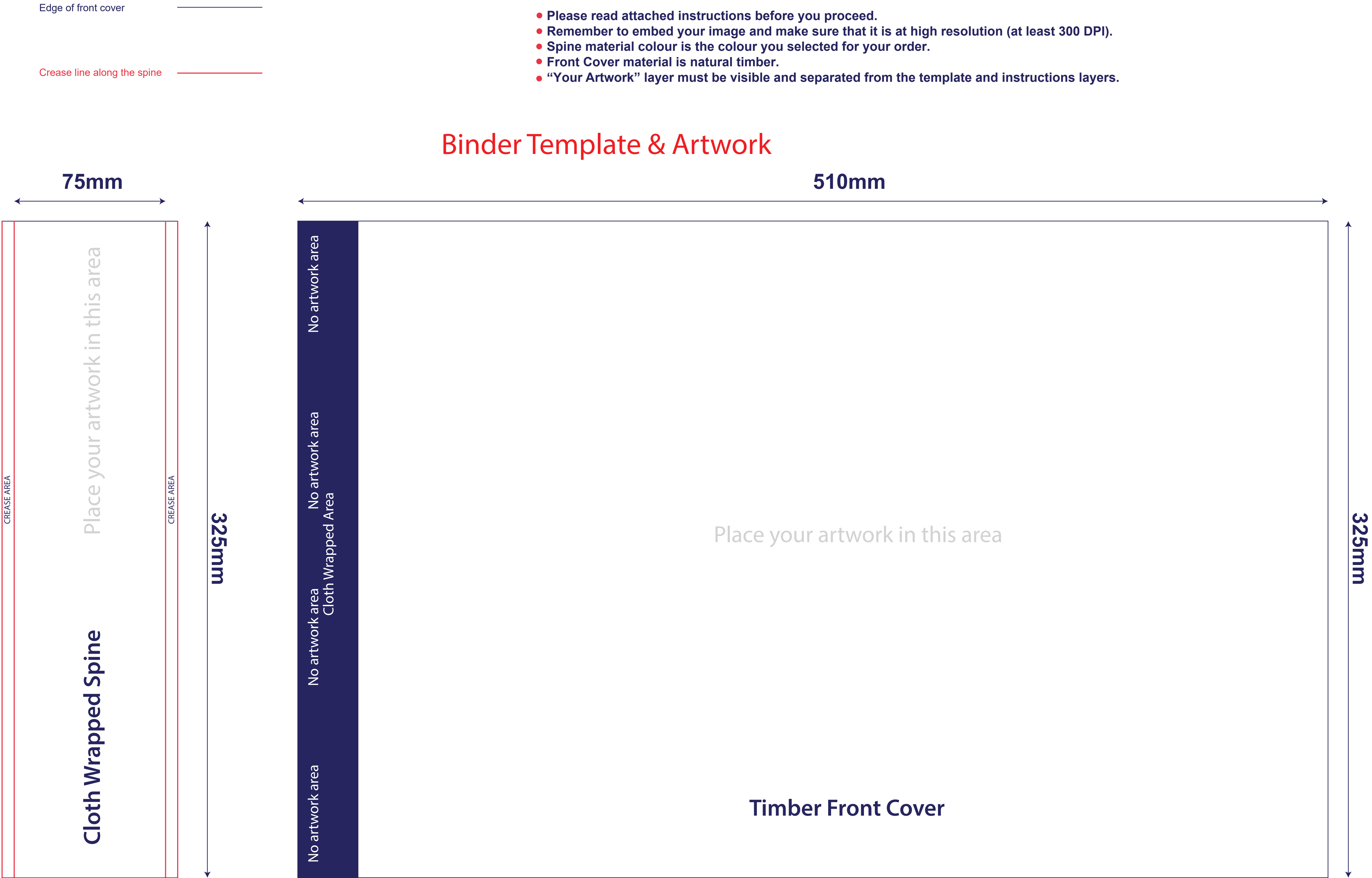


Notes:

- Please read attached instructions before you proceed.
- Remember to embed your image and make sure that it is at high resolution (at least 300 DPI).
- Spine material colour is the colour you selected for your order.
- Front Cover material is natural timber.
- “Your Artwork” layer must be visible and separated from the template and instructions layers.

Binder Template & Artwork



**Please place another copy of your artwork to scale
without the template on this page**

Notes:

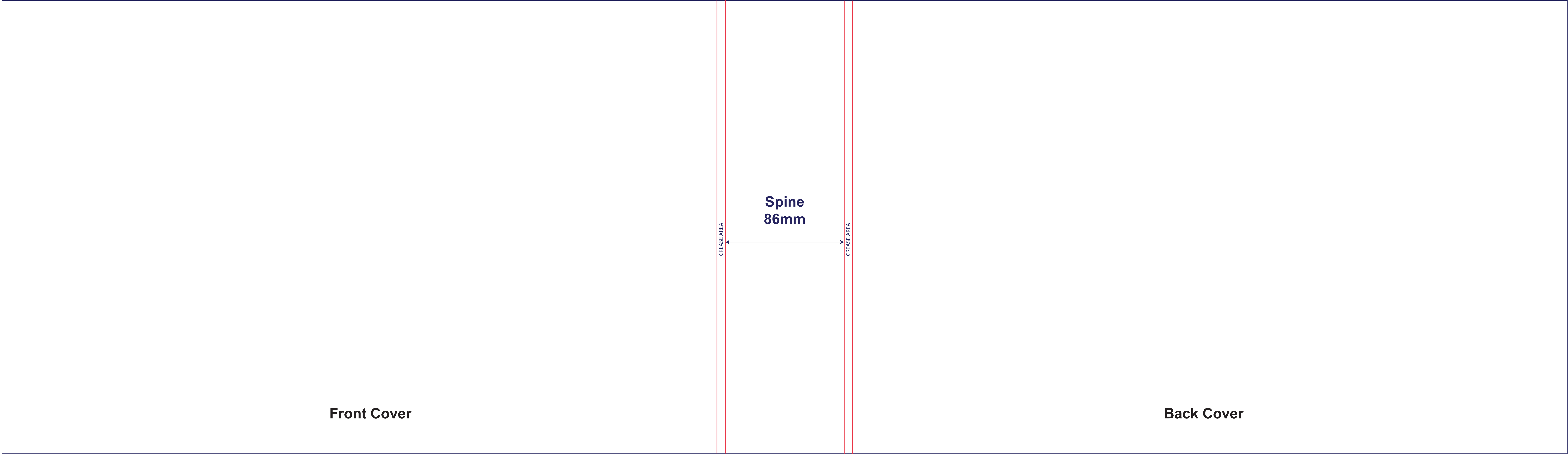
- Please read attached instructions before you proceed.
- Remember to embed your image and make sure that it is at high resolution (at least 300 DPI).
- Slipcase material colour is the colour that matches your binder.
- “Your Artwork” layer must be visible and separated from the template and instructions layers.

Edge of front cover

Crease line along the spine

Slipcase Template & Artwork

517mm



Front Cover

Spine
86mm

Back Cover

**Please place another copy of your artwork to scale
without the template on this page**